



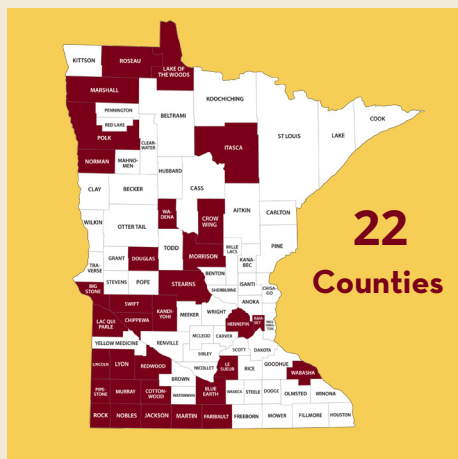
Minnesota Northstar Geriatrics Workforce Enhancement Program

The purpose of the MN Northstar Geriatrics Enhancement Program is to improve the healthcare and health of older adults living across Minnesota in these ways:

- 1) **Educate and train** Minnesota's primary care and geriatrics workforce to care for older adults in integrated geriatrics and primary care models.
- 2) **Partner with community-based organizations** across the state in rectifying gaps in the care of older adults and in promoting Age-Friendly primary healthcare and Dementia Friendly communities.

MN Northstar GWEP had **22 projects** that supported five objectives to improve the healthcare and health of older adults living across Minnesota. These 22 projects were funded between July 2019 through June 2024.

| | |
|---|---|
| <p>Objective 1: Develop partnerships between academia, primary care delivery sites or systems, and community-based organizations to educate and train a workforce.</p> | <p>60 Partnerships Academic, Primary Care, Community-Based Organizations, Other GWEPs, & Government partners</p> |
| <p>Objective 2: Provide geriatrics training to a wide variety of healthcare providers and interprofessional learners in Minnesota.</p> | <p>1,375 Age-Friendly Resources 33,126 Interactions with Age-Friendly Resources</p> |
| <p>Objective 3: Transform primary care sites throughout the state of Minnesota to integrate the practice of and training for age-friendly geriatrics care.</p> | <p>571 65+ Patients received Age-Friendly Care at 4 primary care clinics</p> |
| <p>Objective 4: Deliver community-based outreach and support for older adult patients, their families, their caregivers, and direct care workers.</p> | <p>7 Age-Friendly and Dementia Friendly projects reaching across MN 22 Counties Visited 8,486 Individuals attended ADRD events 9 ALTER faith-based organizations</p> |
| <p>Objective 5: Train and support older adult patients afflicted with Alzheimer's and Dementia Related Diseases, their families, their caregivers.</p> | <p>4 Alzheimer's and Dementia Related Disease Projects 1,644 Individuals completed Dementia Friends 315 Dentistry professionals completed advance dementia friendly training</p> |



Participation in MN GWEP Events, Conferences & Trainings from 2019-2024

15,727 + **26,428** + **2,278** = **44,433**

PATIENTS, FAMILIES, CAREGIVERS, COMMUNITY HEALTH PROFESSIONALS & STAFF STUDENT, RESIDENTS, AND FELLOWS **Total**

The maroon counties indicate where Minnesota Northstar GWEP has traveled to serve Minnesota's older adults, their families, and their caregivers.



Minnesota Northstar Geriatrics Workforce Enhancement Program

Goal 1: *Develop partnerships between academia, primary care delivery sites or systems, and community-based organizations to educate and train a workforce, including curriculum development as necessary, to provide value-based care that improves health outcomes for older adults.*

Key Accomplishments for Minnesota Northstar GWEP Interprofessional Geriatrics Coordinating Council (IPGCC) and the Community Advisory Board (CAB)

The team's work from 2019-2024 has impacted several outcomes in education/practice, outreach and policy.

IPGCC

Education

- Created and revised Geriatrics Education toolkits
- Created, edited, and built awareness of resources for Age Friendly Care and Education Collection
- Broadened awareness of careers in Geriatrics among interprofessional fields
- Collaboratively wrote rich and detailed cases for interprofessional case competition

Outreach

- Presented over 25 presentations and posters at national conferences
- Trained 1800 interprofessional health workers on caring for older adults who identify as LGBTQ+
- Through ALTER, MN GWEP has built a local network of faith communities focusing on caring for older adults living with dementia
- Partnered with MGS in webinars and conferences to bring forth our MN GWEP toolkits, and resources from the Age-Friendly Collection; Ms. Frazier and Ms. Schicker on the MGS education committee
- Partnered on healthy aging content with Minnesota Public Television, Public Radio, & Dr. Jon Hallberg

Policy

- IPGCC members have presented before the legislature numerous times on topics such as workforce enhancement and Age-Friendly Health Systems
- Members of IPGCC serve with the Board of Aging, MN Healthy Brain Initiative, MDH Oral Health, and the Legislative Task Force on Aging at the Minnesota state legislature.
- Collaborations with: Dr. Rajean Moone in Age-Friendly Minnesota & state wide partners to promote 4M's Age-Friendly care

CAB

Education

- Partnered with Trellis in 2021 & 2024 for the creation of the After-Visit Summary for primary care clinical visits with +65 patients
- Partnered with CUHCC and MHealth Fairview clinics in the transformation of primary clinical sites to Age-Friendly Health Systems

Outreach

- Partnered with MAGIC, a part of Minnesota Leadership Council on Aging, in co-organizing and presenting sessions at their annual conference
- Partnered with Trellis on Dementia Friends, Dementia Friendly@Work, and Minnesota Association of Area Agencies on Aging to build awareness around dementia across the state of Minnesota
- Partnered with Minnesota Leadership Council on Aging, Age-Friendly Minnesota, & the national Reframe Aging for Workshop Series called Reframe Aging

Policy

- Promoted Age Friendly Health Systems in the larger ecosystem of Age Friendly Minnesota

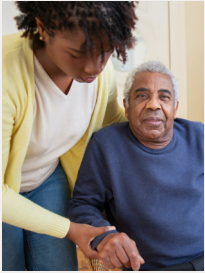


Minnesota Northstar Geriatrics Workforce Enhancement Program

Key Accomplishments

Goal 2: Provide geriatrics training to a wide variety of healthcare providers and interprofessional learners in Minnesota.

Age-Friendly Care and Education Collection



The Age-Friendly Care and Education Collection is a curated collection highlighting educational and clinical resources for educators, health professionals, learners, and others interested in improving care for older adults.



1,355
CURATED RESOURCES IN
THE AGE-FRIENDLY CARE
AND EDUCATION COLLECTION

Engagement with Collection Since 2020

23,348

ENGAGEMENTS
WITH WEBSITE

10

GWEP PARTNERS WITH
LINKS TO COLLECTION

Geriatric Toolkit and Tipsheet Themes

- Geriatric Assessment
- Addressing Ageism in Healthcare
- Aging Immigrants
- Delirium
- Effective Medication Self Management
- HIV and Aging
- LGBTQ Aging
- Managing Urinary Incontinence in Older Adults
- Maximizing Mobility in Older Adults
- Opioid Use Disorder in Older Adults
- Suicide in Older Adults
- Understanding Medicare, Medicaid, & Hospice Benefits for Provider
- What Matters



Dr. Kris Talley led the development of the MN Northstar GWEP's signature geriatric educational materials: [Age-Friendly Care and Education Collection](#), [Geri Preceptor Tipsheets](#), and [Geriatric Education Toolkits](#)

9,778

ENGAGEMENTS
WITH WEBSITE

10

GERIATRIC EDUCATION
TOOLKITS

10

GERI PRECEPTOR
TIPSHEETS

Interprofessional Geriatric Case Competition



The case competitions were planned and implemented in collaboration with the GWEP at Saint Louis University. Community partners sponsored student prizes.

The case competitions have involved

327
STUDENTS

from **20**
disciplines

Diverse volunteer judges and coaches

FACULTY
COMMUNITY PARTNERS
IN AGING

PRIMARY CARE CLINICS
LONG TERM SUPPORTS
AND SERVICES



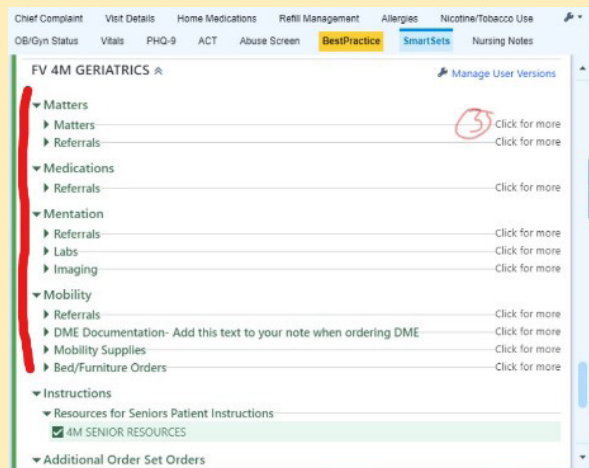
Minnesota Northstar Geriatrics Workforce Enhancement Program

Key Accomplishments

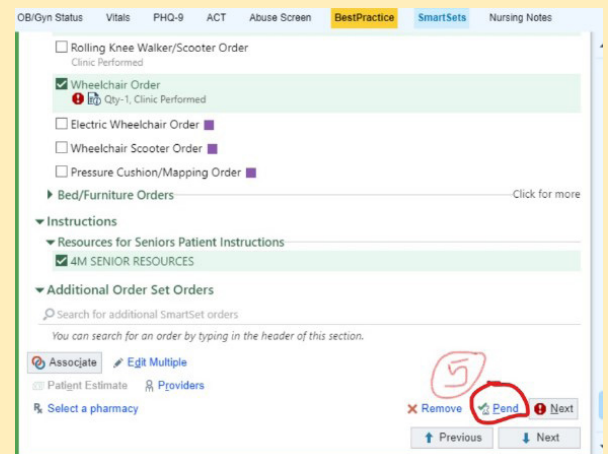
Goal 3: Transform primary care sites throughout the state of Minnesota to integrate the practice of and training for age-friendly geriatrics care.

We utilize a **4Ms SmartSet** in patients' Electronic Medical Record to provide Age-Friendly Care during routine primary care delivery. The SmartSet has 3 components:

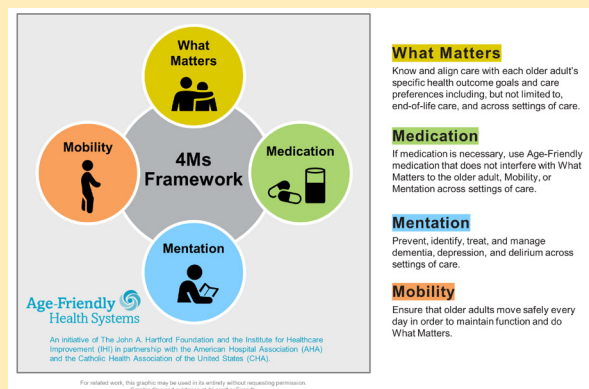
1 Templated note with specific sections for each M that the provider can select.



2 Order sets for bloodwork, imaging, referrals, durable medical equipment. These order sets are organized according to the 4Ms of Age-Friendly Care to improve diagnostic and therapeutic services.



3 After Visit Summary is a standardized set of resources for patients and family members to access in the state of Minnesota. The AVS is also organized by each of the 4Ms of Age-Friendly Care.



This improved model of care has been implemented in four primary care clinics: M Health Bethesda, Phalen, Smiley's, and CUHCC.



Minnesota Northstar Geriatrics Workforce Enhancement Program

Key Accomplishments

Goal 4: *Deliver community-based outreach and support for older adult patients, their families, their caregivers, and direct care workers.*



Caring for People with Memory Loss Conference

The annual conferences are in June and hosted by the School of Public Health and MN GWEP. This popular event has been hosted by UMN for 15 years! It is expanded to include online and in-person attendees with family members of those experiencing memory loss, caregivers and health professionals.

Attendance over the past four years
1,357



DEER

Led by Joe Gaugler, PhD, **DEER (Dementia Education Experience Roadshow)** sessions are primarily designed to provide educational outreach on topics related to Alzheimer’s disease and dementia and other issues of importance to Minnesotans as they relate to longterm care. We plan with local community partners and Area Agencies on Aging. The monthly roadshow travels around the state to a new county in Minnesota.

22 **1,271**
COUNTIES VISITED COMMUNITY MEMBERS



ALTER

Led by Robbin Frazier with MN GWEP and the Center for Healthy Aging and Innovation, Alter (TM) is a faith-based, community outreach program. It is designed to equip African American communities with the knowledge of dementia and other age-related issues, as well as the tools needed to better support families affected by dementia. The Minnesota Alter Program has a network of nine faith based organizations.

A network of **9** faith-based organizations



African Immigrant Memory Collaborative is a community-university partnership between ACER and the Families and Long-Term Care Projects of the School of Public Health, and MN GWEP with Dr. Manka Nkimbeng. ACER enables an understanding of the lived experiences and extent of dementia care needs and resources among African immigrants in the Twin Cities.

67 Immigrant Participants in Pilot



Minnesota Northstar Geriatrics Workforce Enhancement Program

Key Accomplishments

Goal 5: Train and support older adult patients afflicted with Alzheimer's and Dementia Related Diseases, their families, their caregivers, as well as healthcare providers and health professions learners in respectful, effective, patient-centered care and advocacy.



Dementia Friends is led by Dr. Teresa McCarthy, Teresa Schicker, and community partner Trellis. Dementia Friends Minnesota is part of an international network to share content on memory loss to advance dementia friendly communities. The one-hour Information Sessions are run by a Dementia Friends Champion.



Minnesota Geriatrics ECHO led by Drs. Teresa McCarthy and Rajeane Moone, with partners from Hennepin Health. This Geriatrics ECHO offers virtual workshops twice a month to leaders in assisted living / nursing homes/ long term care. The Geriatrics ECHO began as a COVID-19 mitigation strategy for nursing homes. Geriatrics ECHO provides information on emerging practices and technical assistance to senior care leaders.

Dementia Friends has trained

1,644

STUDENTS, PROFESSIONALS AND STAFF

20

DEMENTIA FRIENDS CHAMPIONS

from these professions

MEDICINE
NURSING
PHYSICAL THERAPY

PHARMACY
OCCUPATIONAL THERAPY

PUBLIC HEALTH
MORTUARY SCIENCE
VETERINARY MEDICINE

In 43 Geriatrics ECHO sessions

1,097

LEARNERS

at these locations

24

URBAN NURSING HOMES (NON-TC)

26

RURAL NURSING HOMES ACROSS MN



The Dementia Friendly Dental Practices (DFDP) project, led by Dr. Steve Shuman, developed and implemented a 6-hour advanced training for all members of dental practices to become dementia friendly. The training increased the capacity of regional dental practices to care for the growing number of older adults living with dementia.



Education on LGBTQ Aging is led by Drs. Moone and McCarthy, in partnership with Rainbow Health. This builds awareness of LGBTQ Aging with students, nurses, certified nursing assistants, service providers, and policy makers. A [LGBTQ+ Aging Needs Assessment report](#) in 2022 received nationwide interest because of this remarkable three-decade-long needs assessment of Minnesotans who identify as LGBTQ+.

DFDP has trained **315** individuals

121

DDS/DMD

61

DENTAL HYGIENISTS

114

DENTAL ASSISTANTS

2

NURSES

16

ADMINISTRATIVE STAFF

1

MEDICAL DOCTOR

Sessions on LGBTQ+ and Aging have included

1,795

LEARNERS

44

LEARNING SESSIONS